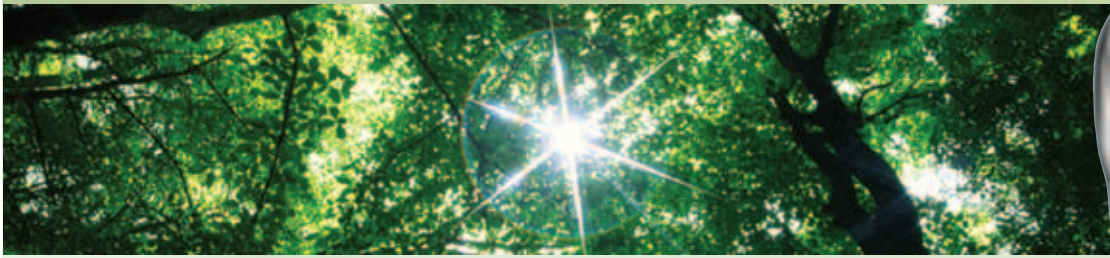


EXTREMEAIR® GREEN GUIDE



GREEN CERTIFICATIONS



The **EXTREMEAIR** hand dryer has been GreenSpec® Listed. This is an unbiased list of the most

environmentally friendly products published by the editors of *Environmental Building News*. The **EXTREMEAIR** met tough GreenSpec standards because it **uses 80% less energy than conventional hand dryers** and reduces maintenance and waste.



The **EXTREMEAIR** helps facilities qualify for **LEED® Credits**. LEED stands for Leadership in Energy and Environmental Design. The **EXTREMEAIR** helps facilities qualify for LEED Credits in several categories:

- EA Credit 1** Optimizing Energy Performance (Mandatory)
- MR Credit 6** Solid Waste Management - Waste Stream Audit
- IEQ Credit 3.1** Green Cleaning - High Performance Cleaning Program
- IO Credit 1** Innovation in Operations
- IO Credit 3** Documenting Sustainable Building Cost Impacts

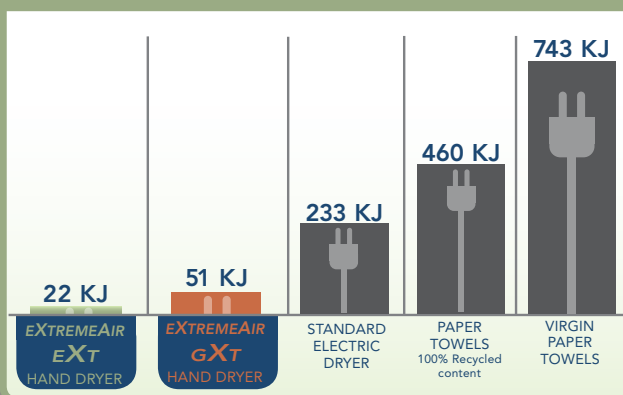


ENERGY REDUCTION

Reduce your carbon footprint by reducing energy.

The **EXTREMEAIR EXT** series is the first high speed hand dryer to reduce power consumption to an industry-leading 540 watts of electricity. That's up to **3 X LESS ENERGY** than other "green" hand dryers.

COMPARISON OF ENERGY PER USE



Energy is measured in KiloJoules (KJ). Lower numbers represent less energy use and less cost.

GREEN FACTS

Paper towels cannot be recycled, consume precious resources, and use excessive landfill space. **Making one ton of virgin paper towels can use:**

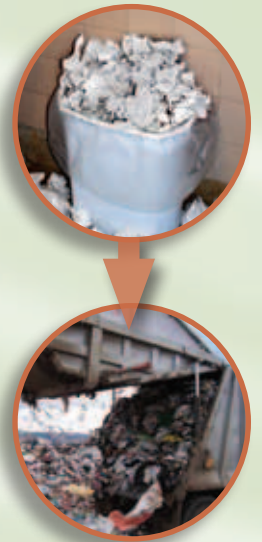
7,000 GALLONS OF WATER

17 FULL GROWN TREES

464 GALLONS OF OIL

42 GALLONS OF GASOLINE

3 YARDS OF LANDFILL WASTE



A major bottling company will eliminate about 96 yards of landfill waste per year by replacing five paper towel dispensers with **EXTREMEAIR** hand dryers. The operating costs of the hand dryers is less than \$16 per year. To calculate your cost saving while going green, please see the opposite page.

COST SAVINGS

Going green doesn't have to cost a lot of money. In fact, the **EXTREMEAIR** saves customers 95% versus paper towel costs while eliminating landfill waste. For example:

COST ANALYSIS FOR A UNIVERSITY

Paper Towel Usage	3,850 CASES
Total Paper Costs	\$288,750
Hand Dryer Operating Costs	\$3,080
ANNUAL SAVINGS	\$285,668
Payback Time	3 MONTHS

To see more cost savings examples or calculate your savings, please visit our website www.americandryer.com



Ph: 800.485.7003 | Email: sales@americandryer.com

© American Dryer, Inc. All Rights Reserved. Rev. July 2011

COST SAVINGS WORKSHEET

cost per 1,000 hand dryings

GXT SERIES

\$0.42

EXT SERIES

\$0.18

PAPER TOWEL COSTS

- Number of Cases of Paper Towels Used Annually _____
- Cost Per Case of Paper Towels
(Include Freight & Sales Tax) _____ (Typically \$50 to \$60 per case)
- Total Paper Towel Cost Per Year
(Item 1 multiplied by Item 2) _____
- Handling and Disposal Cost of Paper Towels
(Multiply Item 3 by 0.5)
Industry standard factor of 50% to account for the cost of procurement, storage, servicing of dispensers, collection and disposal of paper towels) _____
- TOTAL COST OF PAPER TOWELS PER YEAR** (Item 3 plus Item 4)

HAND DRYER COSTS

- Number of Paper Towels Used Annually
(Item 1 multiplied by the number of sheets per case) _____ (C-fold = 2,400/case
Multi-fold = 4,000/case
Roll towels = 4,800/case)
- Number of Hand Drying Per Year
(Item 6 divided by 2.5 towels per dry) _____
- Hours of Hand Dryer Usage
(**EXTREMEAIR** - Item 7 divided by 360 dries/hour
Other dryers - Item 7 divided by 120 dries/hour) _____
- Cost of Electricity Per Hour of Hand Drying
(EXT dryers 0.54 multiplied by your KWH rate
GX/GXT dryers - 1.5 multiplied by your KWH rate
Other dryers - 2.3 multiplied by your KWH rate) _____ (Typically KWH rate is \$0.10/KWH)
- Annual Hand Dryer Operating Costs
(Item 8 multiplied by Item 9) _____
- YOUR ANNUAL SAVINGS** (Item 5 minus Item 10)
- COMPUTE YOUR % SAVINGS** (Item 11 divided by Item 5)

YOUR PAYBACK TIME

- Total Cost of Hand Dryers Including Installation
(Installation is typically \$50 to \$125 per dryer) _____
- PAYBACK TIME IN MONTHS**
(Item 12 divided by Item 11 multiplied by 12 months)

Estimate number of hand dryers required:

- One hand dryer for every two wash basins in most applications
- One hand dryer for every wash basin in heavy traffic applications
- Four hand dryers for every 54" round wash station

© American Dryer, Inc. All Rights Reserved.

American Dryer, Inc.

33067 Industrial Rd | Livonia, MI 48150

Ph: 800.485.7003 | 734.421.2400 | Fax: 734.421.5580

www.americandryer.com | Email: sales@americandryer.com